

# Swindon South Neighbourhood Policing Team



January - March 2013

Quarterly newsletter

## Your neighbourhood priorities

Our Neighbourhood Policing Team (NPT) priorities for January to March 2013 have been set in consultation with local communities and partner agencies. We set these priorities so we can focus on tackling issues which are important to you in your area:

We are committed to tackling these issues to ensure our communities are a safer place to live.

### Anti-Social Behaviour (ASB):

Residents in Beverstone Grove and Monmouth Close have raised concerns that the winter evenings will expose them to acts of criminal damage and stone throwing as they experienced last year. Patrols of the area will be carried out at relevant times to prevent offences or identify and catch those responsible. A new Neighbourhood Watch scheme has been initiated.

### Speeding:

Speeding continues to be a regular issue reported to us, specifically in the Wroughton area. The NPT will continue to monitor the locations which have been reported to us as the worst affected.

### Colin Smith ASBO Latest



Mr Colin Smith, 38 of no fixed abode appeared before Swindon Magistrates on 17 December 2012 where his Interim ASBO was extended until 19/03/2013. The conditions of his Anti-social Behaviour Order are as follows:


- 1) Not to engage in begging for money anywhere in Wiltshire whether in a public place or private premises
- 2) Not to enter Old Town bordered by High Street, Marlborough Road, Old Mill Lane and Charlotte Mews
- 3) Not to enter Broome Manor Lane
- 3) Prohibited from sleeping rough within 10 yards of residential private premises anywhere in Swindon without the owner's consent
- 4) Prohibited from harassing occupiers of residential premises at or outside their homes.

## Sergeant Aileen Conway

Sergeant Gary Wells has now left the team and we are pleased to announce that Sergeant Aileen Conway will be assuming responsibility for the area. Prior to these changes, Sergeant Conway was responsible for the Swindon East NPT, and through the close working relationship that already exist between the South and East Swindon NPTs, she already has a strong grasp of the area and its issues. Sergeant Conway looks forward to meeting many of you in the forthcoming months.


In this newsletter you can read about our priorities, success stories and when our consultations are taking place. Please feel free to come along to one of these to speak to us about any of your concerns – as we are always keen to hear from the community. You can also contact us via the details below.

 **101**

 Swindonsouthnpt  
@wiltshire.pnn.police.uk

 www.wiltshire.police.uk

  www.facebook.com/wiltshire.police  
www.twitter.com/wiltshirepolice

 See page 2 for details of meetings/consultations

## 101 & Neighbourhood Watch

### Non-emergency police telephone number:

The non-emergency police telephone number has changed. The previous 0845 408 7000 number ceased in September 2012.

For all non-emergencies please now call **101**. Calls will be charged at 15 pence however long the call lasts.

Please continue to call **999** in an emergency.

### Neighbourhood Watch News:

A new scheme has been launched in Beverstone Grove on the Lawns and hopefully the first schemes will reach Wichelstowe in the New Year. A number of residents have expressed an interest and we will be supporting them in bringing the schemes to

reality.

### Getting together with your neighbours to take action can cut local crime.

Neighbourhood Watch is all about an active partnership with the police.

Neighbourhood Watch schemes can help cut crime, the opportunities for crime, help and reassure those who live in fear of crime, encourage neighbourliness and closer communities plus provide a better place to live, work and play.

For further details please contact your Neighbourhood Police Team or visit;

[www.wiltshire.police.uk](http://www.wiltshire.police.uk)

## Crime News

### Residential Burglaries:

The end of 2012 saw a marked rise in the number of burglaries being reported in the area.

During the week residential properties between the times of 10am and 5pm whilst unoccupied have been targeted with preferred method of entry being to force or break the rear doors and windows.

In particular, properties owned or occupied by Asian families appear to have been specifically targeted. Please make sure your property is safe and secure and any additional security measures are utilised each time your property is unoccupied. Consider alarms, security lighting and physical deterrents such as fences, gravel or types of plants.

### Theft of Motorcycles:

A significant number of motorcycles have been stolen or tampered with over the recent period throughout the Swindon South area. The vast majority of these crimes have taken place overnight and involve motorcycles that can be pushed away by damaging the steering lock and ignition system.

To lessen the chances of becoming a victim of crime, wherever possible, store your motorcycle inside a building or use an additional lock to secure the motorcycle to another immovable object.

Please report anyone that you see acting suspiciously promptly to Wiltshire Police.

## Lawn & Old Town Consultations

Come and see one of your local officers during consultations at the following locations:

Lawn Community Centre:  
1<sup>st</sup> Saturday of every month.  
10:00-11:00

Croft Sports Centre:  
1<sup>st</sup> Saturday of every month.  
11:00-noon

East Wichel School:  
24 January at 7-8pm

Swindon Arts Centre:  
31 January 6:30-8.00pm

Lawn Community Centre on the following Saturdays:

19 January 10:30-11:30am  
16 February 10:30-11:30am  
16 March 10:30-11:30am  
20 April 10:30-11:30am

## Rural Consultations

Come and see one of your local officers during consultations at one of the following locations:

Wroughton Country Market, every Friday from 09:30-10:30 (if the team are not available, please leave your contact details with the Parish Office who will pass them on)

Calley Memorial Hall, Chiseldon –1<sup>st</sup> Saturday of every month 11:30-12:30pm

Consultations for other times and locations will be publicised separately. You can check times and dates by visiting our website:

[www.wiltshire.police.uk](http://www.wiltshire.police.uk)

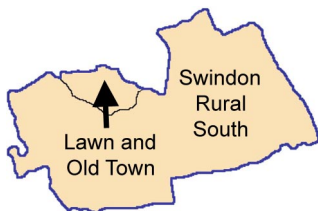
Or by calling 101 and asking to speak to a member of the Swindon South NPT.

## Swindon South Neighbourhood Policing Team



swindonsouthnpt@wiltshire.pnn.police.uk

### NPT map



### Lawn and Old Town Beat



Community Beat Manager  
**Tim North**



Police Community Support Officer  
**Mark Chivers**

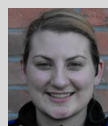


Police Community Support Officer  
**Paul Outlaw**

### Swindon Rural South Beat



Community Beat Manager  
**Rory Draper**



Police Community Support Officer  
**Kerry Vicat**

The aim of neighbourhood policing is to have a dedicated team in your local community. We are here to work **with you** to tackle local concerns raised **by you**. We work with residents and local agencies to improve your quality of life.

To contact Wiltshire Police or to report a crime or an incident please call on **101**. Only call **999** in an emergency when a crime is in progress.

If you want to provide us with information anonymously about a crime you can call Crimestoppers on 0800 555 111.

For other non crime matters contact Swindon Borough Council on 01793 445500.

### PCC Crime Plan 2013:

The newly elected Police and Crime Commissioner for Wiltshire and Swindon, Mr Angus Macpherson, is writing his Police and Crime Plan for Wiltshire, which will be published by the end of March. The five year plan will be based on local priorities and will set the strategic direction of policing in Wiltshire and Swindon. The plan will determine local objectives for policing and reducing crime and disorder in the area and will outline how policing resources will be allocated and funding agreements. It will also outline how he will be held to account by both the public and the Police and Crime Panel. The plan will be published on the PCC's official website [www.wiltshire-pcc.gov.uk](http://www.wiltshire-pcc.gov.uk)

### Measurement Evaluation Learning (MEL) Survey 2013:

During January and February 2013 Wiltshire Police will be undertaking the second stage of the Measurement Evaluation Learning (MEL) Survey. This survey will be conducted via telephone and seeks to explore quality of life, reassurance and fear of crime across Wiltshire and Swindon.



**101**



Swindonsouthnpt  
[@wiltshire.pnn.police.uk](mailto:@wiltshire.pnn.police.uk)



[www.wiltshire.police.uk](http://www.wiltshire.police.uk)



[www.facebook.com/wiltshire.police](http://www.facebook.com/wiltshire.police)  
[www.twitter.com/wiltshirepolice](http://www.twitter.com/wiltshirepolice)

Our last newsletter featured advice regarding Halloween period. It is good to report that overall this passed without any issues regarding the behaviour of those out Trick or Treating. We can also report that the Fireworks period also passed without incident, I was going to say quietly, but then it wouldn't have been a very good display.

### **Wroughton Robberies:**

One incident I am sad to report on was a violent robbery that occurred in the area of Inverary Road, Wroughton on four teenage boys. This resulted in property being stolen from them by a large group of youths, both boys and girls. Enquiries quickly led to a number of arrests of those thought to be involved and to date, six of the group have been charged with offences relating to the incident and will appear at Swindon Crown Court later this month. Community Intelligence was key to the successful investigation and I would like to remind any of our readers that if you see or hear something that appears suspicious or makes you concerned, tell us about it promptly as it could be of real importance.

### **Wroughton Vehicle Damages:**

On the 9 November 2012 a significant number of vehicles were damaged in the village of Wroughton and due to the quick thinking of Police Community Support Officers, a male was located with injuries consistent with damaging vehicles. He was quickly arrested by police officers and admitted eight offences and has received a Conditional Caution which involves compensation being paid to the victims for the damage.

### **House Burglaries:**

Many of you will have been aware of house burglaries that have been taking place mainly in daylight hours throughout November and December. We have made three arrests in connection with some of these offences and although this has had an affect there are still burglaries occurring. We would encourage you to remain vigilant and to report anything that you consider to be suspicious as soon as is possible, obviously we are actively pursuing all leads in relation to these offences.

### **Mobile Phones:**

Do you own a mobile phone? If so do you know its IMEI number?

We have many reports of mobile phones being lost or stolen but unfortunately few people have a record of the IMEI number which is unique to their phone. Although knowing this number won't prevent your phone getting lost or being stolen it will help us in identifying those we recover and in some cases help to prosecute those responsible for theft.

### **Croft Road Park and Ride:**

We have received some complaints that users of the Park and Ride site, at the bottom of Croft Road just by the motorway overbridge, have been leaving the site onto Croft Road and turning right to head back towards Swindon.

These actions are in contravention of the traffic directions at the point of exit. We will be carrying out patrols and enforcement at the location at unspecified times. As with all traffic directions these are present to ensure traffic flow is maintained and that road user's safety is optimised.